

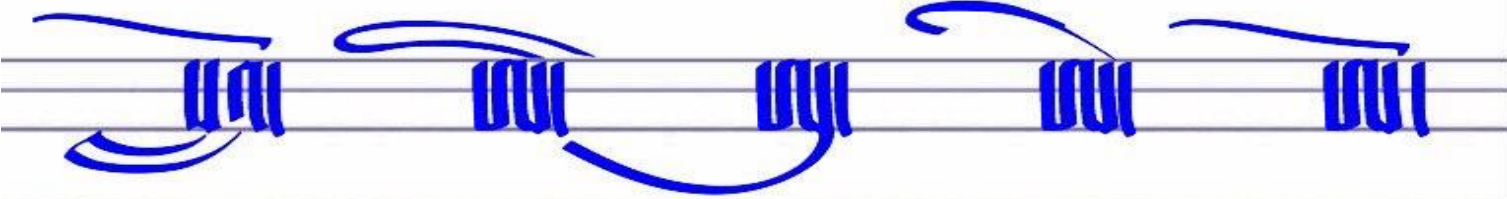
ལྷ་མོ་ཡི་འཇམ་མཚོ་འཇམ་མཚོ་ལྷ་མོ་ལྷ་མོ་

ལྷ་མོ་ལྷ་མོ་ལྷ་མོ་ལྷ་མོ་ལྷ་མོ་

ལྷ་མོ་ལྷ་མོ་ལྷ་མོ་ལྷ་མོ་ལྷ་མོ་

ལྷ་མོ་

༢༠༢༠ལོ་





ᐅ ᐃ ᐅ ᐃ ᐅ ᐃ ᐅ ᐃ

Blank handwriting practice lines.





Handwritten blue letters on a five-line staff: *h*, *h*, *h*, *h*, *m*, *m*, *d*, *m*.

A series of horizontal blue lines for handwriting practice, consisting of 18 lines below the first staff.



ଶି ଲି ଶି ଶି ଶି ଶି ଶି ଶି





ገ ገ ገ ገ ገ ገ

Blank handwriting practice lines.





Handwritten text in a stylized blue font on a set of four horizontal lines. The text consists of a large initial letter followed by several smaller characters.

A series of horizontal blue lines for writing, starting from the second line below the header and ending at the second line above the footer.





Handwritten text in a stylized blue font on a set of four-line musical staves. The text consists of ten characters: 'M', 'D', 'M', 'E', 'E', 'M', 'M', 'Q', 'M', 'S'. The 'Q' character features a long, sweeping tail that extends downwards and to the left.








ጊዜዎቻችን ገብ ገብ

Blank lined writing area for practice.





ਗੁਰੂ ਗ੍ਰੰਥ ਸਾਹਿਬ ਜੀ





ମନୁ କ୍ଷମା ମନୁ କ୍ଷମା ମନୁ କ୍ଷମା ମନୁ କ୍ଷମା ମନୁ କ୍ଷମା ମନୁ କ୍ଷମା ମନୁ କ୍ଷମା

Handwriting practice area with multiple horizontal lines.





ਗੁਰਮਤਿ ਸਾਹਿਬੁ ਸਿਰਿ ਸਿਰਿ ਸਿਰਿ ਸਿਰਿ ਸਿਰਿ ਸਿਰਿ

Blank lined writing area for practice.



କିମି ମିମି ମିମି ମିମି ମିମି

ወደ ንግሥት ንግሥት ገብረ ገብረ





ਗੁਰੂ ਗ੍ਰੰਥ ਸਾਹਿਬ ਨਾਨਕ

Blank lined writing area for practice.





Handwritten text in a stylized blue script on a set of four horizontal lines. The text consists of a long word followed by four shorter words, all written in a consistent, decorative cursive style.

A series of horizontal blue lines for writing practice, consisting of 18 lines in total, providing a template for practicing the handwriting style shown in the header.



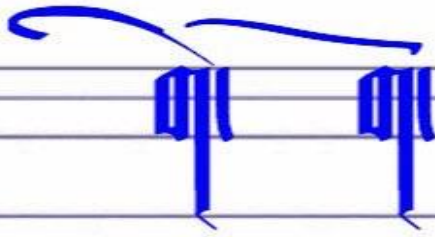




Handwritten musical notation in blue ink on a five-line staff. The notation consists of six notes: a half note with a slur, a quarter note, a half note, a quarter note, a half note with a slur, and a quarter note.

A series of empty five-line musical staves for practice, extending from the first staff down to the bottom of the page.







Handwritten musical notation in blue ink on a five-line staff. The notation consists of six notes: four quarter notes followed by two eighth notes. The first four notes are grouped by a slur, and the last two notes are also grouped by a slur. The notes are: G4, A4, B4, C5, D5, and E5.





Handwritten cursive letters 'N' and 'H' on a set of four horizontal lines. The first group shows two 'N's, and the second group shows four 'H's. Each letter is formed with a blue stroke, starting with a decorative flourish above it.

A series of horizontal blue lines for handwriting practice, consisting of 18 lines below the first row.





Handwritten Urdu calligraphy in blue ink on a set of four horizontal lines. The text consists of two groups of characters. The first group contains the characters 'اے', 'اے', 'اے', 'اے', 'اے', 'اے', 'اے', 'اے', 'اے', 'اے'. The second group contains the characters 'اے', 'اے', 'اے', 'اے', 'اے', 'اے', 'اے', 'اے', 'اے', 'اے'. The characters are written in a stylized, cursive script with prominent flourishes and loops.

A series of horizontal lines for handwriting practice, consisting of 18 lines in total, spaced evenly down the page.





Handwritten musical notation in blue ink on a five-line staff. The notation consists of a series of notes and rests, including a half note, a quarter note, and a half note, with various slurs and ties connecting them.

A series of horizontal blue lines for writing, consisting of 15 lines below the first staff.





Handwritten musical notation in blue ink on a five-line staff. The notation consists of several notes with stems and beams, including a pair of eighth notes, a pair of sixteenth notes, and a pair of eighth notes with a beam. The notes are positioned on the first and second lines of the staff.

A series of horizontal lines for writing, consisting of 18 lines in total, providing space for additional musical notation or text.



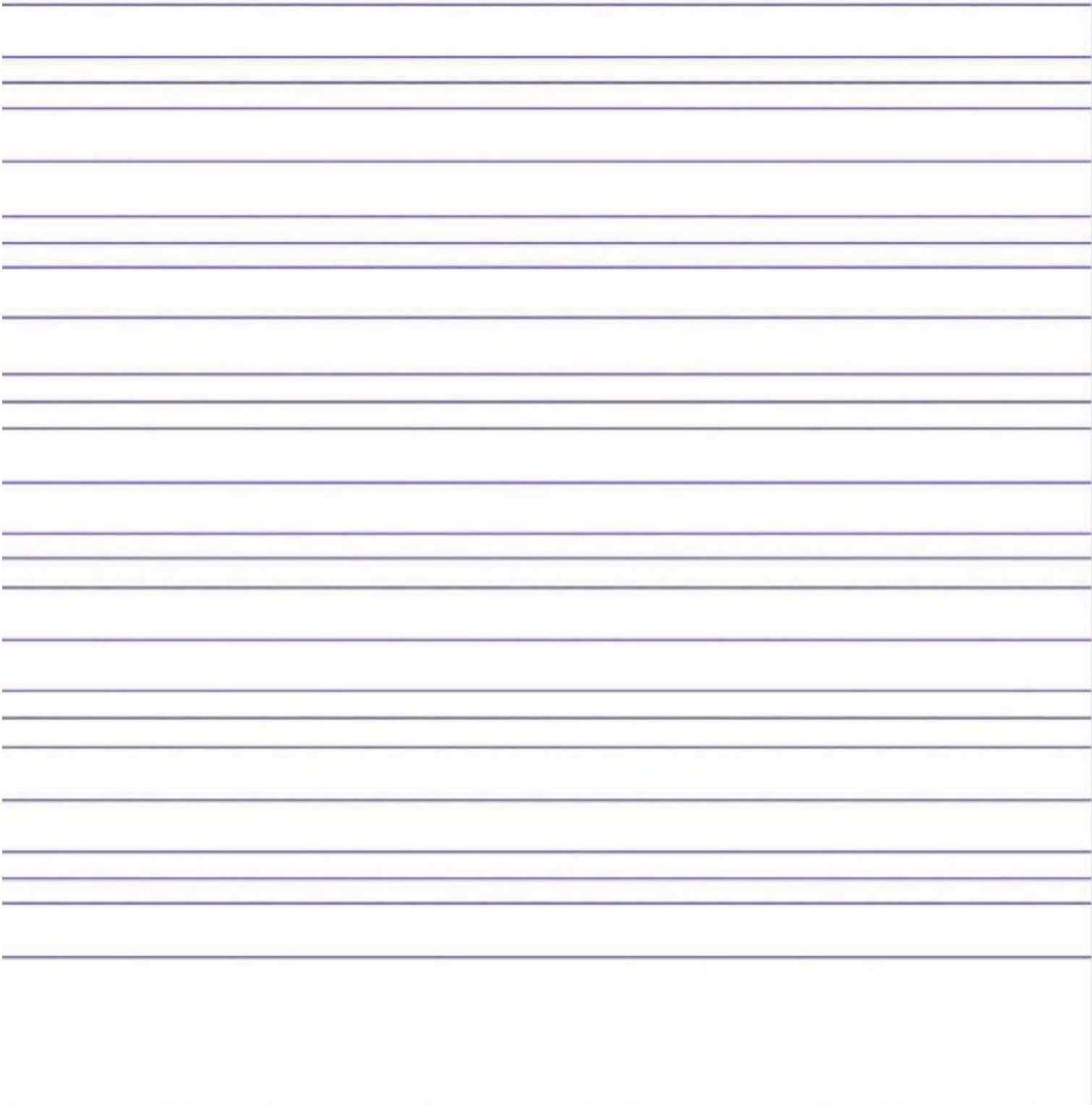
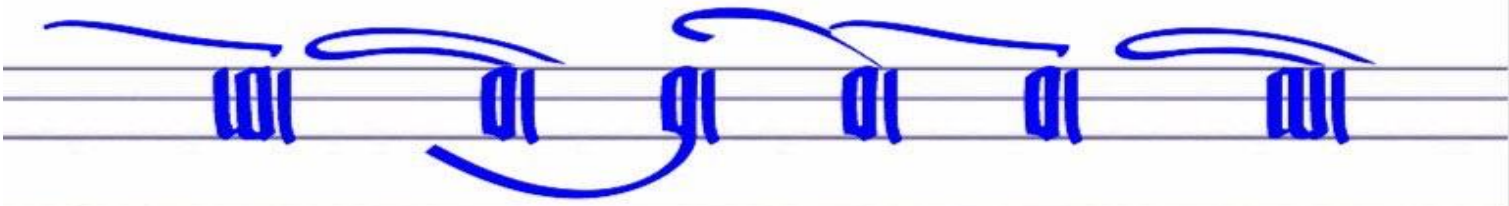


Handwriting practice sheet with a five-line staff. The first line contains a blue cursive script. The remaining four lines are blank for practice.

Handwritten cursive text on the first line of the staff, consisting of several connected loops and flourishes.









Handwritten musical notation in blue ink on a five-line staff. The notation consists of six notes: a quarter note, two eighth notes, a quarter note, and three eighth notes. The notes are connected by a continuous blue line with decorative flourishes at the beginning and end.





Handwritten musical notation in blue ink on a five-line staff. The notation consists of a sequence of notes and rests: a quarter note, a half note, a quarter note, a half note, a quarter note, a half note, and a quarter note. The notes are connected by a continuous line with various curves and flourishes, characteristic of a specific musical style.

A series of horizontal lines for writing, consisting of 18 lines spaced evenly down the page.





Handwritten musical notation in blue ink on a five-line staff. The notation consists of six notes with stems and beams, arranged in two groups of three. The first group has a downward-pointing stem, and the second group has an upward-pointing stem. The notes are connected by horizontal beams.

A series of horizontal blue lines for handwriting practice, consisting of 18 lines below the first staff.





ਖ ਜਾ ਜਾ ਜਾ ਜਾ ਜਾ

Blank handwriting practice lines consisting of multiple horizontal blue lines.





Handwritten musical notation in blue ink on a five-line staff. The notation consists of a sequence of notes and rests, including a large initial flourish on the left and a large flourish on the right. The notes are connected by horizontal lines, and there are several rests indicated by vertical lines.

A series of horizontal blue lines for handwriting practice, consisting of 18 lines below the first staff.





Handwritten musical notation in blue ink on a five-line staff. The notation consists of two groups of notes. The first group has four notes, each with a vertical stem and a horizontal beam, connected by a large, sweeping curve underneath. The second group has three notes, also with vertical stems and horizontal beams, connected by a similar large, sweeping curve underneath. The notes are positioned on the top line of the staff.

A series of horizontal lines for handwriting practice, consisting of 18 evenly spaced lines extending across the width of the page.



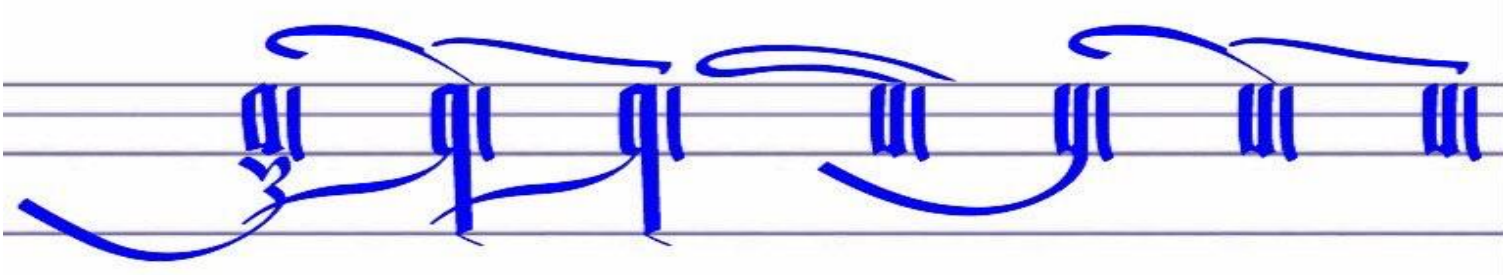


Handwritten musical notation in blue ink on a five-line staff. The notation consists of a series of notes and rests, including a half note, a quarter note, and a half note, with various stems and beams.

A series of empty five-line musical staves for practice, arranged vertically down the page.







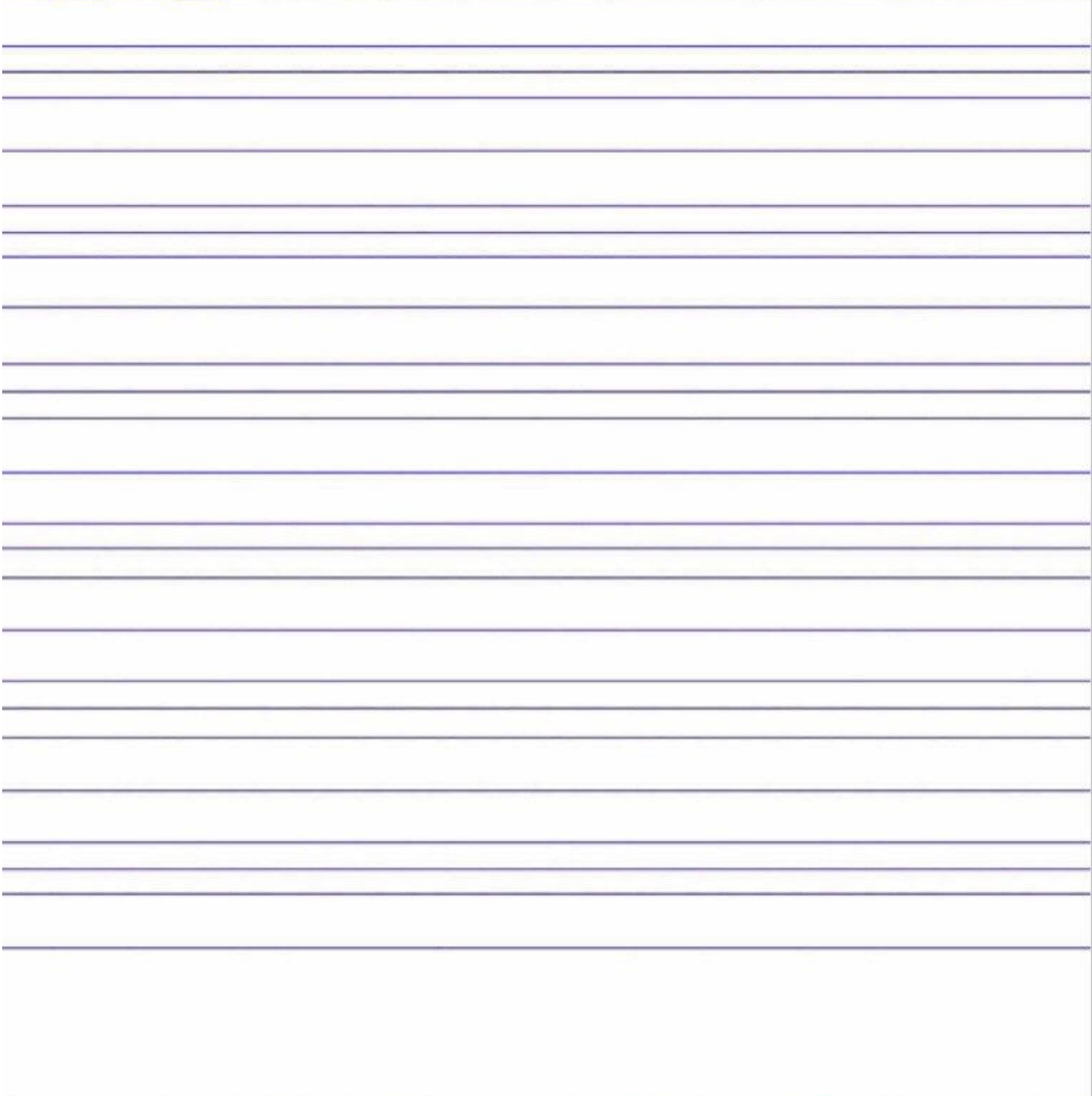


Handwritten Urdu calligraphy on a blue-lined staff. The text consists of four characters: 'اے' (ay), 'ہے' (hey), 'ہے' (hey), and 'ہے' (hey). The first character 'اے' is written with a large, sweeping flourish that extends across the top of the staff. The subsequent characters 'ہے' are written in a more compact, vertical style.





Handwritten text in a stylized blue font on a musical staff. The text consists of a long word followed by three shorter words, each with a decorative flourish above it.





Handwritten text in a stylized blue font on a set of four horizontal lines. The text consists of four characters: 'T', 'K', 'E', and 'S'. Each character has a decorative flourish above it that spans across the top two lines of the set.

A series of horizontal lines for writing practice, consisting of 18 lines in total, spaced evenly down the page.



ਗੁਰੂ ਗੁਰੂ ਗੁਰੂ ਗੁ



31 91 11 091 119111

Lined writing area with multiple horizontal blue lines for text entry.





Handwritten blue text on a lined background, consisting of four stylized, mirrored characters or symbols arranged horizontally.





Handwritten letters in blue ink on a set of four-line musical staves. The letters are: 'm', 'E', 'W', and 'K'. Each letter is written on the top line of the staff and has a decorative flourish above it. The 'm' has a simple arch. The 'E' has a more complex, multi-lobed flourish. The 'W' has a large, sweeping arch. The 'K' has a similar arch to the 'W'.





Handwritten text in a stylized script, possibly a form of shorthand or a specific dialect, consisting of five distinct characters or symbols arranged horizontally.





ਸੁਖਿ ਸੁਖਿ ਸੁਖਿ ਸੁਖਿ

Blank handwriting practice lines consisting of multiple horizontal blue lines.





ਗੁਰੂ ਗੁਰੂ ਗੁਰੂ ਗੁਰੂ

Blank lined writing area for practicing the Gurmukhi text.






ਗੁਰੂ

ਗੁਰੂ

ਗੁਰੂ ਗੁਰੂ

Blank lined writing area for practicing Gurmukhi script.





Handwritten text in a blue Gothic script on a set of four horizontal lines. The text consists of a large initial letter 'Z' followed by the words 'unzopiohi' and a series of characters: 'op', 'u', 'ji', 'wi', 'oi', 'oi', 'oi'.







ᑭᑭᑭᑭ ᑭᑭᑭᑭ ᑭᑭᑭᑭ ᑭᑭᑭᑭ ᑭᑭᑭᑭ

Blank handwriting practice lines consisting of multiple horizontal blue lines.





Handwritten text in a stylized script on a set of five horizontal lines. The text consists of five characters: 𐌹𐌺𐌰, 𐌹𐌺𐌰, 𐌹𐌺𐌰, 𐌹𐌺𐌰, and 𐌹𐌺𐌰. Each character is written in blue ink with a distinct downward-pointing tail.







Handwritten text in a stylized blue font on a five-line staff. The text consists of four characters: '𐌆𐌆𐌆', '𐌆𐌆𐌆', '𐌆𐌆𐌆𐌆', and '𐌆𐌆𐌆'. The third character has a decorative flourish above it.

A series of horizontal blue lines for handwriting practice, consisting of 18 lines below the first staff.





ከገሃገሃ ጦላ ገጠላ ያላላ ለጠላ

Blank lined writing area for practice.



ገጽ ፩ ገጽ ፩ ገጽ ፩ ገጽ ፩ ገጽ ፩



Handwritten text in a stylized script, possibly a form of shorthand or a specific dialect, consisting of five distinct characters or words: 𐌲𐌹𐌸, 𐌶𐌹𐌸𐌹, 𐌶𐌹𐌸𐌹, 𐌹𐌹, 𐌶𐌹𐌸𐌹.





դրաւ ճարտար հաւ զաւ զաւ զաւ

Handwriting practice area consisting of multiple horizontal blue lines on a white background.

